



RTO: 45041 | CRICOS: 03553J

A vertical decorative element consisting of a grid of small white dots on a dark blue background.

ORGANISATIONAL CHART

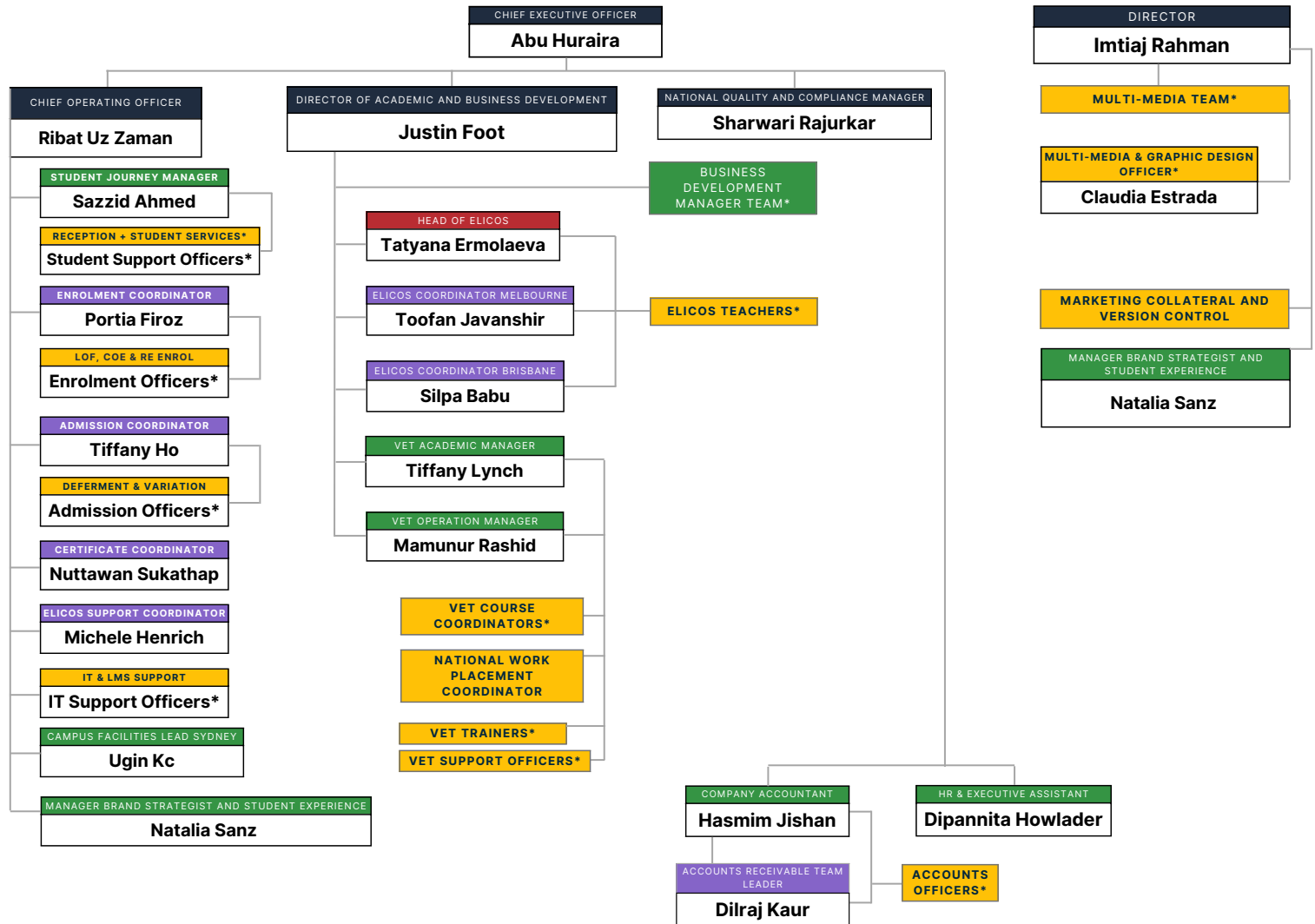
ANIT Australia Pty Ltd T/A Albright
Institute of Business and Language
RTO #: 45041 | CRICOS #: 03553J

www.albrightinstitute.edu.au

ORGANISATIONAL HIERARCHY



- Senior Management
- Department Head
- Managers
- Coordinator/ Senior Staff
- Officers



SENIOR MANAGEMENT		
CHIEF EXECUTIVE OFFICER Abu Huraira	DIRECTOR Imtiaj Rahman	COMPLIANCE & OPERATIONS
DIRECTOR OF ACADEMIC AND BUSINESS DEVELOPMENT Justin Foot		
NATIONAL QUALITY AND COMPLIANCE MANAGER Sharwari Rajurkar		
		CHIEF OPERATING OFFICER Ribat Uz Zaman

COMPLAINTS & APPEALS BOARD	
EXTERNAL	INTERNAL FORMAL
CHIEF EXECUTIVE OFFICER Abu Huraira	NATIONAL QUALITY AND COMPLIANCE MANAGER Sharwari Rajurkar
DIRECTOR Imtiaj Rahman	CHIEF OPERATING OFFICER Ribat Uz Zaman
CHIEF OPERATING OFFICER Ribat Uz Zaman	DIRECTOR OF ACADEMIC AND BUSINESS DEVELOPMENT Justin Foot
NATIONAL QUALITY AND COMPLIANCE MANAGER Sharwari Rajurkar	ELICOS SUPPORT COORDINATOR Michele Henrich
DIRECTOR OF ACADEMIC AND BUSINESS DEVELOPMENT Justin Foot	STUDENT JOURNEY MANAGER Sazzid Ahmed
	VET OPERATIONS MANAGER Mamunur Rashid
	HEAD OF ELICOS Tatyana Ermolaeva

IN PURVIEW OF: ABU & IMTIAJ

IN PURVIEW OF: JUSTIN & SHARWARI

IN PURVIEW OF: RIBAT & SHARWARI

FINANCE & ACCOUNTS

COMPANY ACCOUNTANT Hasmim Jishan
ACCOUNTS RECEIVABLE TEAM LEADER Dilraj Kaur

ACCOUNTS OFFICERS*

MARKETING & RECRUITMENT

BUSINESS DEVELOPMENT MANAGER TEAM
ONSHORE
NATIONAL KEY ACCOUNTS MANAGER Carlos Plata
MARKETING SPECIALIST Daniela Ochoa Gutierrez
BUSINESS DEVELOPMENT MANAGER Haruna Yamano
BUSINESS DEVELOPMENT MANAGER Dinh (David) Truc Le
BUSINESS DEVELOPMENT MANAGER Kazi Shameem
BUSINESS DEVELOPMENT MANAGER Jenny Yang
BUSINESS DEVELOPMENT MANAGER Natalia Sanz
BUSINESS DEVELOPMENT MANAGER Rashedul Sarker
OFFSHORE
BUSINESS DEVELOPMENT MANAGER Hien Nguyen Thu
MARKETING
MANAGER BRAND STRATEGIST AND STUDENT EXPERIENCE Natalia Sanz

TEACHING & TRAINING

VET
VET ACADEMIC MANAGER Tiffany Lynch
VET OPERATION MANAGER Mamunur Rashid
VET COURSE COORDINATOR
VET TRAINERS*
VET SUPPORT TEAM*
NATIONAL WORK PLACEMENT COORDINATOR
ELICOS
HEAD OF ELICOS Tatyana Ermolaeva
ELICOS COORDINATOR MELBOURNE Toofan Javanshir
ELICOS COORDINATOR BRISBANE Silpa Babu
ELICOS COORDINATOR ADELAIDE Tiffany Lynch
ELICOS TEACHERS

ENROLMENT & ADMISSION

ENROLMENT
ENROLMENT COORDINATOR Portia Firoz
LOF, COE & RE ENROL Enrolment Officers*
ADMISSION
ADMISSION COORDINATOR Tiffany Ho
SENIOR ADMISSION OFFICER Ami Vyas
DEFERMENT & COURSE VARIATION Admission Officer*

STUDENT JOURNEY & SUPPORT SERVICES

STUDENT SERVICES
STUDENT JOURNEY MANAGER Sazzid Ahmed
CERTIFICATE COORDINATOR Nuttawan Sukathap
ELICOS SUPPORT COORDINATOR Michele Henrich
VET SUPPORT OFFICERS*
STUDENT SUPPORT OFFICERS*
STUDENT EXPERIENCE
MANAGER BRAND STRATEGIST AND STUDENT EXPERIENCE Natalia Sanz

IT & FACILITIES

IT & LMS
IT & LMS SUPPORT IT Support Officers*
CAMPUS FACILITIES LEAD
CAMPUS FACILITIES LEAD SYDNEY Ugin Kc
CAMPUS FACILITIES LEAD BRISBANE Pukar Adhikari
CAMPUS FACILITIES LEAD ADELAIDE Shafwat Kabir Rafsan

ACADEMIC BOARD		
CHAIR: JUSTIN FOOT		
CHIEF EXECUTIVE OFFICER Abu Huraira	DIRECTOR Imtiaj Rahman	
CHIEF OPERATING OFFICER Ribat Uz Zaman	NATIONAL QUALITY AND COMPLIANCE MANAGER Sharwari Rajurkar	
VET ACADEMIC MANAGER Tiffany Lynch	VET OPERATIONS MANAGER Mamunur Rashid	HEAD OF ELICOS Tatyana Ermolaeva

CAMPUS OPERATIONS GOVERNANCE		
CHAIR: RIBAT UZ ZAMAN		
CAMPUS FACILITIES LEAD BRISBANE Pukar Adhikari	HR & EXECUTIVE ASSISTANT Dipannita Howlader	
CAMPUS FACILITIES LEAD SYDNEY Ugin Kc	CAMPUS FACILITIES LEAD ADELAIDE Shafwat Kabir Rafsan	

AGENT MANAGEMENT & PERFORMANCE AUDIT	
AUDITOR: SHARWARI RAJURKAR & JUSTIN FOOT	
ENROLMENT COORDINATOR Portia Firoz	CAMPUS FACILITIES LEAD SYDNEY Ugin Kc
BUSINESS DEVELOPMENT MANAGER TEAM*	

MULTI-MEDIA PUBLICATION & MARKETING COLLATERALS CONTROL
VERSION CONTROL MANAGER: NATALIA SANZ
MULTI-MEDIA & GRAPHIC DESIGN OFFICER Claudia Estrada

QUALITY, CONTINUOUS IMPROVEMENTS & COMPLIANCE GOVERNANCE			
CHAIR: SHARWARI RAJURKAR			
CHIEF OPERATING OFFICER Ribat Uz Zaman	ENROLMENT COORDINATOR Portia Firoz	STUDENT JOURNEY MANAGER Sazzid Ahmed	HR & EXECUTIVE ASSISTANT Dipannita Howlader
VET ACADEMIC MANAGER Tiffany Lynch	HEAD OF ELICOS Tatyana Ermolaeva	CERTIFICATE COORDINATOR Nuttawan Sukathap	ADMISSION COORDINATOR Tiffany Ho